

Sierra Wireless® RX55 Quick Start Guide

What's in the Box

- AirLink RX55 LTE Router
- Locking DC power cable
- AirLink Complete guide to ALMS router registration
- This Quick Start Guide for quick router configuration and connection

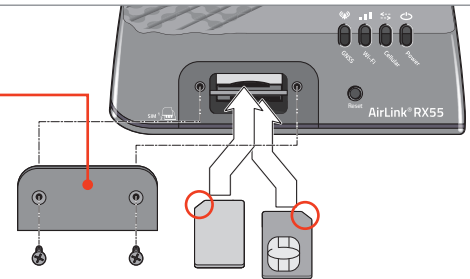
STEP 1: Register Your Router with ALMS

One year of AirLink Complete is included with your router when you or your Sierra Wireless Partner register your router with ALMS. Registering with ALMS allows you to remotely deploy, monitor and maintain multiple AirLink routers and to access technical support.

For more information on AirLink Complete and ALMS, see the included AirLink Complete guide. Note that your Sierra Wireless Partner may have pre-registered the router and activated your AirLink Complete subscription. Your router will automatically connect to ALMS the first time it powers on to complete its registration.

STEP 2: Install Your SIM Cards

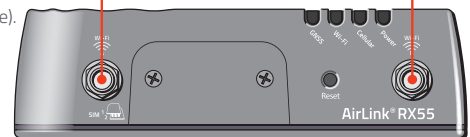
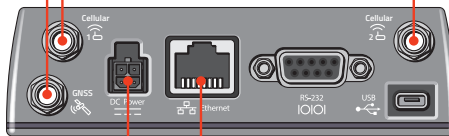
1. Using a #1 Phillips screwdriver, remove the SIM card cover.
2. Slide the SIM cards into the SIM card slots until they click into place. By default, the SIM card in slot 1 (the upper slot) is the Primary SIM card. When the RX55 is powered on or reboots, it automatically connects to the network associated with the Primary SIM card.
3. Re-attach the cover.



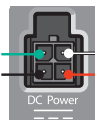
STEP 3: Connect and Turn On the Router

Sierra Wireless strongly recommends that you always ground the chassis using the unpainted mounting hole. For more information, refer to the RX55 Hardware User Guide. A green LED chase may occur when the router is powered on, indicating that the radio module is being configured for your SIM card. The process can take 6–7 minutes. Once the router's radio module is configured for the SIM card, it automatically begins the activation/provisioning process and attempts to connect to the mobile network. This process takes a few minutes. A successful connection is indicated by a green Cellular LED. If the router does not automatically connect to the network, refer to the AirLink OS documentation at source.sierrawireless.com/airlinkos.

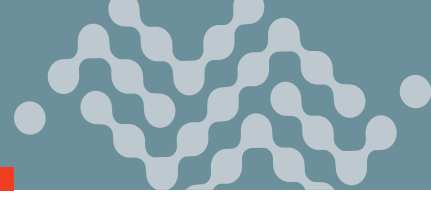
1. Connect Cellular antennas and GNSS antenna (if applicable).
2. Connect dual Wi-Fi antennas (if applicable).
3. Connect 9–36 VDC. To operate the router between 7–36 V, after startup, adjust the Voltage Threshold (see the AirLink OS documentation).
4. Connect a Windows® computer to the router with an Ethernet cable. If required by your application, connect the RS-232 port and/or the USB port.



Green (GPIO) Optional
Black (GND)
White (Ignition Sense)¹
Red (Power)



1. If not using an AC adapter, Ignition Sense must be connected to vehicle ignition or the positive terminal of your power supply.



STEP 4: Complete the Router Configuration (Recommended Procedure)

1. For your first RX55 router, connect your computer to the router's Ethernet port and use the router's AirLink OS web interface — follow the instructions in **Configure the Router Locally with AirLink OS**, below.
2. If additional RX55 routers in your deployment will use the same configuration, use ALMS to make a template from this router. Then, when needed, use ALMS to push the template to the additional routers. Refer to the ALMS documentation at source.sierrawireless.com/airvantage/alms for details.

Configure the Router Locally with AirLink OS (Optional Procedure)

1. Connect your computer to a LAN connection on the router (such as a LAN-configured Ethernet port or Wi-Fi connection).
2. On your computer, open a browser window and enter [https://airlink./](https://airlink/) or **192.168.1.1**, and accept any browser certificate warnings.
3. At the router's login screen, enter the name "admin" and the default password that is available from the router's label, and click SIGN IN.
4. Go to **System > User Accounts** and set a new password.
5. Change and save your router's configuration.
Password Notes: The default password is only available from the printed label and label QR code. Default passwords are not recorded or recoverable by Sierra Wireless. Set a new password to ensure router security. A factory reset restores the default password.

Configure and Monitor Your Router Remotely with ALMS (Optional Procedure)

Use ALMS to remotely monitor your router, and to perform maintenance activities and additional configuration.

1. On your Internet-connected computer, open a browser and enter your regional ALMS URL (na.airvantage.net or eu.airvantage.net) and log in to your ALMS account.
2. Select **Monitor > Systems** to display your registered routers.
3. Find your router in the list, and select the router.
4. Click the **Configuration** button to display the router's dashboard.
5. Make and save any configuration changes.
 If your ALMS-registered router is powered on and connected to ALMS, configuration changes will be made immediately on your router. If your router is not connected to ALMS, these changes will be applied to the router the next time it connects to ALMS.

For more information, refer to the following resources:

- AirLink RX55 Hardware User Guide: source.sierrawireless.com (scan code below)
- AirLink OS User Guide: source.sierrawireless.com/airlinkos
- ALMS User Guide: source.sierrawireless.com/airvantage/alms
- AirLink Complete: sierrawireless.com/router-solutions/airlink-services

Sierra Wireless Contact Information

Sales information and technical support, including warranty and returns sierrawireless.com/company/contact-us

Corporate and product information sierrawireless.com

