

# TETRA UHF

## Dual Bumper Mount Antenna with Power Divider

01/04/2016 v2

### BMP2-DPD-5F

Covert application

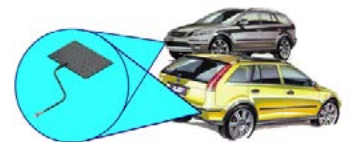
Optimise bumper antenna performance

Improved coverage around vehicle



Panorama BMP bumper antennas are a fully covert solution for vehicle installation

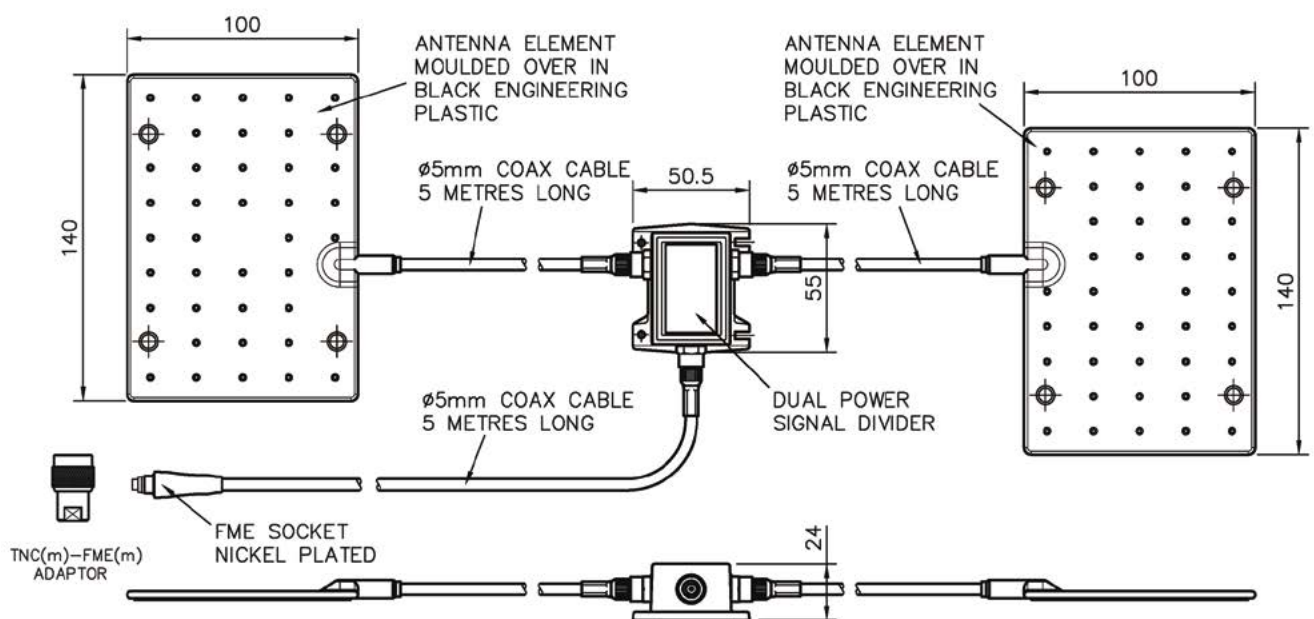
For optimum performance two bumper antennas can be installed, one at the front of the vehicle and one at the rear, helping to create an omni-directional pattern around the vehicle and enabling better network coverage.



Typical antenna positioning

#### Technical Drawing

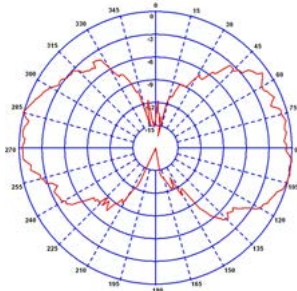
BMP2-DPD-S1-5F Shown



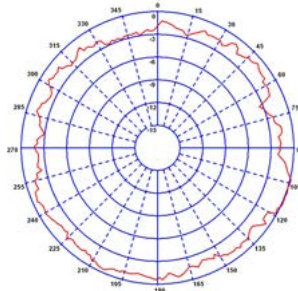
# TETRA UHF

## Dual Bumper Mount Antenna with Power Divider

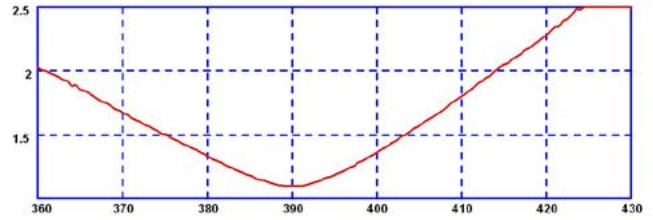
Typical E-Plane (390MHz)



Typical H-Plane (390MHz)



Typical VSWR\*



\*VSWR showing as installed with 5m (17') of CS23 cable

### Part No.

BMP2-DPD-S1-5F

BMP2-DPD-S2-5F

BMP2-DPD-U-5F

### Electrical Data

	BMP2-DPD-S1-5F	BMP2-DPD-S2-5F	BMP2-DPD-U-5F
Frequency Range (MHz)	380-400	410-430	430-472
Operational Band	S1	S2	U
Peak Gain: Isotropic (in free space)	0dBi	0dBi	0dBi
Compared to ¼ wave	2dB	2dB	2dB
Typical VSWR	<2.5:1	<2.5:1	<2.5:1
Polarisation	Vertical	Vertical	Vertical
Pattern	Omni-directional	Omni-directional	Omni-directional
Impedance	50Ω	50Ω	50Ω
Max Input Power (W)	3	3	3

### Mechanical Data

	BMP2-DPD-S1-5F	BMP2-DPD-S2-5F	BMP2-DPD-U-5F
Dimensions (mm)	Length	140 (5.5")	140 (5.5")
	Width	100 (3.9")	100 (3.9")
	Depth	4 (including adhesive pad)	4 (including adhesive pad)
Operating Temp (°C)	-40° / +80°C (-40°/+176° F)	-40° / +80°C (-40°/+176° F)	-40° / +80°C (-40°/+176° F)
Material	TPE	TPE	TPE
Colour	Black	Black	Black

### Mounting Data

Fixing	BMP2-DPD-S1-5F	BMP2-DPD-S2-5F	BMP2-DPD-U-5F
Fixing	Adhesive pad & 4 × fixing holes	Adhesive pad & 4 × fixing holes	Adhesive pad & 4 × fixing holes

### Cable Data

	BMP2-DPD-S1-5F	BMP2-DPD-S2-5F	BMP2-DPD-U-5F
Type	CS23 (RG58 c/u)	CS23 (RG58 c/u)	CS23 (RG58 c/u)
Diameter (mm)	5 (0.19")	5 (0.19")	5 (0.19")
Length (m)	To radio port	5 (16' 4")	5 (16' 4")
	To antenna	5 (16' 4")	5 (16' 4")
Termination	FME (f)	TNC (f)	FME (f)

# TETRA UHF

## Power Divider



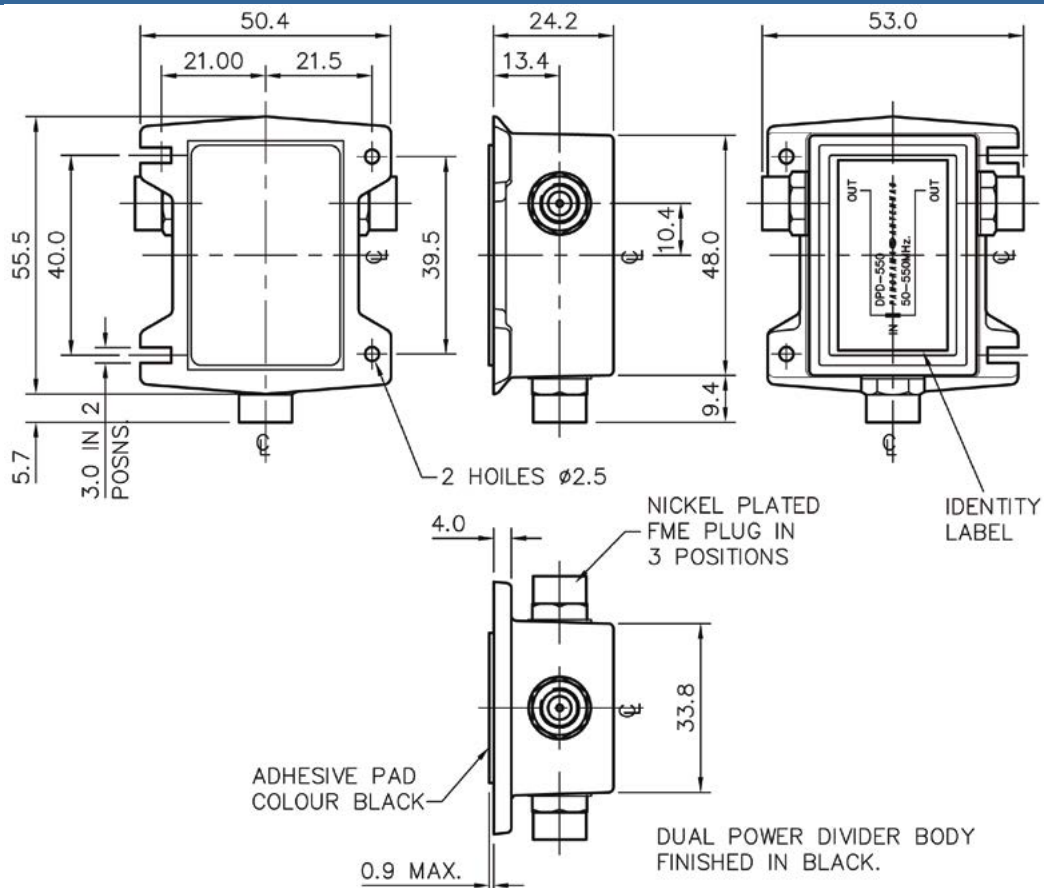
### DPD-550

Connect two bumper antennas to a radio

The Panorama power divider is designed for use with Panorama Bumper Antennas.

For optimum performance two bumper antennas can be installed, one at the front of the vehicle and one at the rear, helping to create an omnidirectional pattern around the vehicle and to enable better network coverage.

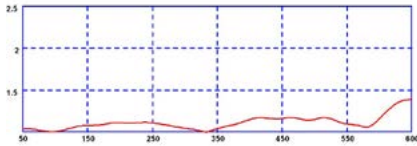
#### Technical Drawing



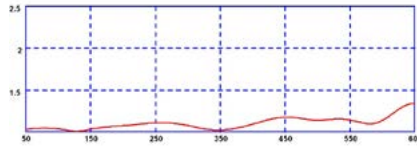
# TETRA UHF

## Power Divider

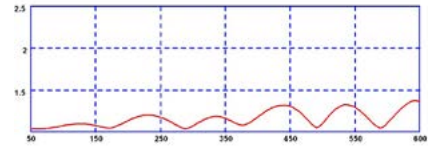
Typical VSWR Port 1



Typical VSWR Port 2



Typical VSWR Port 3



### Part No.

DPD-550

### Electrical Data

Frequency Range (MHz)	50-550
Insertion loss	< 0.5dB
Isolation between output ports	> 25dB
Impedance	50Ω
Max Input Power (W)	3W

### Mechanical Data

Dimensions (mm)	Length	55 (2.1")
	Width	53 (2")
	Height	24 (0.9")
Operating Temp (°C)	-40° / +80°C (-40°/+176°F)	
Material	Engineering plastic	
Colour	Black	
Termination	FME plug (on all ports)	

**Panorama Antennas Ltd**  
Frogmore, London, SW18 1HF, United Kingdom

T: +44 (0)20 8877 4444  
F: +44 (0)20 8877 4477

E: [sales@panorama-antennas.com](mailto:sales@panorama-antennas.com)  
[www.panorama-antennas.com](http://www.panorama-antennas.com)

Waiver: The data given above is indicative of the performance of the product/s under particular conditions and does not imply a guarantee of performance. These specifications are subject to change without notice.

Copyright © Panorama Antennas Ltd. All rights reserved.