

Ethernet PocketPak™

Quick Start Guide

Overview

With the Socket Ethernet PocketPak, you don't have to sit at your desk to connect to your corporate network. The PocketPak lets you plug into any access point on your office LAN using a Windows Powered Pocket PC.



Created for busy professionals who need fast-working solutions, the Ethernet PocketPak features the Socket Low Power Ethernet Card (LP-E), which allows you to synchronize to your corporate LAN at 10 million bps — 500 times faster than a standard serial port.

The PocketPak lets you instantly launch ActiveSync every time you connect, and the LP-E's ultra low power design maximizes your Pocket PC's battery life.

This *Quick Start Guide* briefly shows how to install and use the Low Power Ethernet Card. For detailed information, please refer to the *User's Guide*, in Adobe Acrobat PDF format on the *Socket Ethernet PocketPak Installation CD*. For software updates, please visit: www.socketcom.com/ethernet.htm

For information about other Socket PocketPaks, including mobile data communications and data collection products designed especially for Windows Powered Pocket PCs, please visit: www.socketpocketpak.com

Getting Started is Easy

Installing the LP-E takes just five easy steps. Please refer to the following pages for details on each step.

1. Complete the Network Information Form on the next page.
2. If necessary, install the software drivers onto your Pocket PC.
3. Configure your network settings and click ok.
4. Soft reset your Pocket PC.
5. Connect the LP-E to a LAN port, and insert the LP-E into the Pocket PC.

STEP 1: Network Information Form

To configure your Pocket PC for your office network, consult your network administrator/MIS technician for the information below.

If you would like to email this form to your network administrator/MIS technician, a text version is available both on the installation CD and at www.socketcom.com/ethernet.htm

1. Does the network support Dynamic Host Configuration Protocol (DHCP)?

Yes. If *Yes*, then you need no further information.

No. If *No*, then complete the rest of this form.

2. What are the following IP addresses? (Ask which ones you need.)

Pocket PC IP address: ____ . ____ . ____ . ____

Subnet Mask: ____ . ____ . ____ . ____

Default Gateway: ____ . ____ . ____ . ____

Primary DNS: ____ . ____ . ____ . ____

Secondary DNS: ____ . ____ . ____ . ____

Primary WINS: ____ . ____ . ____ . ____

Secondary WINS: ____ . ____ . ____ . ____

Important: In some cases, you may need to use the IP address of your host PC instead of a Primary WINS address.

Host computer IP address: ____ . ____ . ____ . ____

Notes:

STEP 2: Installing the Software

The LP-E needs software drivers to run on your Pocket PC. You can use the basic NE2000 Ethernet drivers already included on every Pocket PC, or you can use Socket's LP-E drivers, enhanced with these features:

- Auto-launch — ActiveSync or any other program of your choice instantly starts whenever you insert the LP-E
- IP info screen — quickly view IP address information
- Taskbar indicators — convenient indicators for activity and good link

Your three options for software drivers are:

1. If using the NE2000 drivers, no software installation is needed. Proceed to Step 3.
2. If you have an HP Jornada Pocket PC, Socket's enhanced LP-E drivers are already built into the ROM. *DO NOT install Socket's drivers from the installation CD.* Proceed to Step 3.
3. For any other Pocket PC, you can install Socket's enhanced LP-E drivers by running the *Socket Ethernet PocketPak Installation CD*.

Running the Installation CD


Follow these steps to install Socket's enhanced drivers onto the Pocket PC:

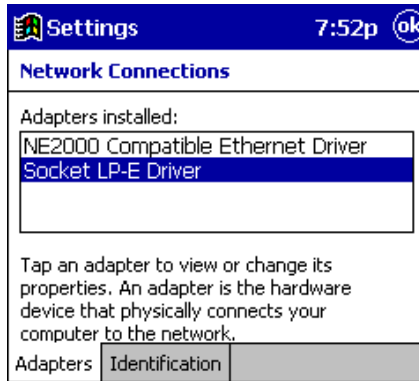
Important! DO NOT insert the LP-E before running the installation CD!

1. Establish an active partnership between your Pocket PC and a host PC. Use your Pocket PC's serial connection cable.
2. Insert the *Socket Ethernet PocketPak Installation CD* into the host PC. The Pocket PC must already have an active partnership with the host PC.
3. Run the SETUP.EXE file on your CD-ROM by doing any of the following:
 - Go to **My Computer** to access your CD drive and run the file.
 - Use Windows Explorer to access your CD drive and run the file.
 - Click **Start/Run** on the host PC. Type **D:\SETUP** (use your CD drive letter). **Important! Verify your CD drive letter before typing!**
4. Follow the instructions on the host PC screen.
5. When installation is done, reset the Pocket PC. Remove the serial cable.

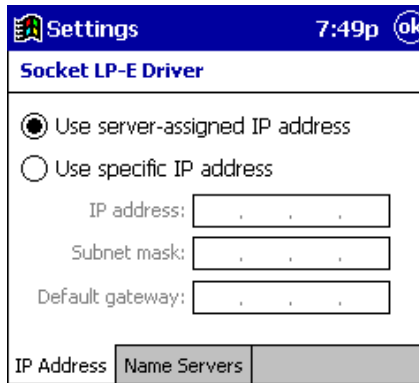
STEP 3: Configuring Network Settings

Before configuring network settings, fill out the Network Information Form.

1. Go to **Start** , **Settings**, then tap on the bottom **Connections** tab. Tap on the **Network** icon.
2. In the **Network Connections** screen, select **Socket LP-E Driver**.



3. In the **Socket LP-E Driver IP Address** screen, enter your network settings from the Network Information Form:



If your LAN supports DHCP, select **Use server-assigned IP address**. If needed, tap on the **Name Servers** tab to enter DNS and WINS addresses.

*Note: If using a static IP address, you may need to enter the host computer's IP address in the **Primary WINS** field to use ActiveSync.*

When done, tap **ok**.

Important! If you forget to tap ok, your settings will not take effect!

STEP 4: Soft Resetting Your Pocket PC

Push the reset button on your device.

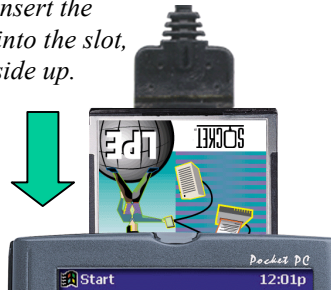
Important! You must soft reset the Pocket PC after configuring network settings, even if you already reset it after running the installation CD!

STEP 5: Connecting the LP-E Card

First plug the connector into a LAN port.

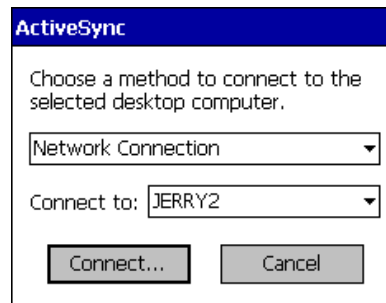


Then insert the LP-E into the slot, right-side up.



Using ActiveSync via a Network

1. After inserting the LP-E and connecting to a LAN, ActiveSync launches:



Note: You must have a partnership with a host PC to use ActiveSync!

2. Select **Network Connection** in the top menu, then tap **Connect**. The Pocket PC will start synchronizing. The **Connection Status** screen will report when synchronization is done.
3. To stop ActiveSync, tap the **Disconnect** button on the **Connection Status** screen. You will still have network access.

Using the Control Panel Applet


The control panel applet lets you control several unique features of Socket's Ethernet software, including:

- Configuring the auto-launch program
- Viewing the IP info for your connection
- Adjusting the taskbar indicators

Accessing the Applet

From the **Today** window, tap on the **Socket LP-E icon** on the task tray.



Alternatively, you can open the control panel applet by tapping **Start** , then **Settings**, and then the bottom **Connections** tab. On the **Settings** screen, tap the **Socket LP-E icon**, identical to the taskbar icon shown above.

Configuring Auto-Launch

Tap on **Auto-Launch** tab to specify what program to run automatically whenever you insert the LP-E. By default, ActiveSync will auto-launch. Use the drop list to select another program to auto-launch, if desired.

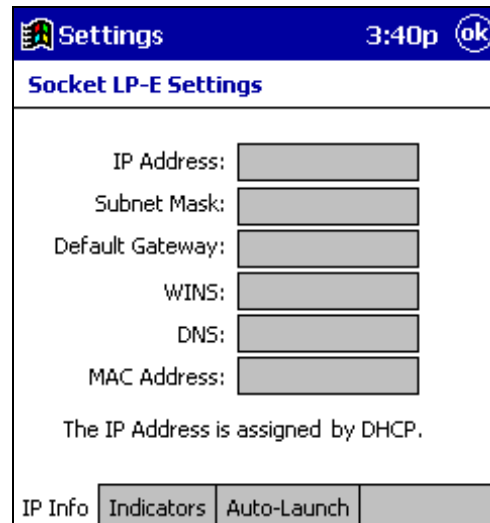


You can use the **Program arguments** field for custom applications that require program arguments to launch.

The **second delay before launch** field lets you specify how long your Pocket PC will wait before auto-launching a program. Most devices have a default of 8 seconds, which gives enough time to recognize the LP-E. However, if your network is slow, or if memory is low, 8 seconds may be too short.

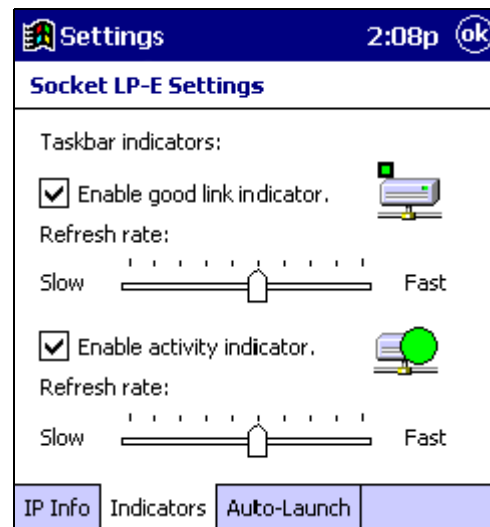
Viewing IP Info

Tap on the **IP Info** tab at the bottom of the screen to view your network's IP addresses. You can also see if your address is static or assigned by DHCP.



Adjusting Taskbar Indicators

Tap on the **Indicators** tab to adjust the good link and activity taskbar indicators.



If You Have Trouble

Refer to the “Troubleshooting” section of the *User’s Guide* on the *Socket Ethernet PocketPak Installation CD*. If problems persist, contact Socket’s technical support department prepared with the following:

- The serial number of your LP-E
- The Windows CE version number on your Pocket PC
- The manufacturer and model number of your Pocket PC
- What you did to try to correct the problem

To reach Socket’s technical support department:

- Email techsupport@socketcom.com
- Phone 510-744-2720
- Fax 510-744-2727

© 2000 Socket Communications, Inc. The Low Power Ethernet Card includes technology licensed under United States Patent Nos. 4,543,450, 4,603,320, 4,686,506, and 4,972,470.

