



Quick Guide for a Windows terminal window with the Nokia Card Phone 2.0

1. HYPERTERMINAL CONFIGURATION

This Quick Guide shows you how to perform a high speed data call, send and receive an SMS and make a voice call on a Windows 95/98/NT terminal. **Setting up the high speed call in Windows is a straightforward process and can also be done very easily using the Card Phone's user interface.**

1. Open HyperTerminal (Start | Programs | Accessories | Communications | HyperTerminal).
2. Select *HyperTerm*.
3. You can press Escape in the start-up window if you don't want to give any name for the connection.



Figure 1. HyperTerminal Startup window.

4. Now select Properties from the File menu (Figure 2).

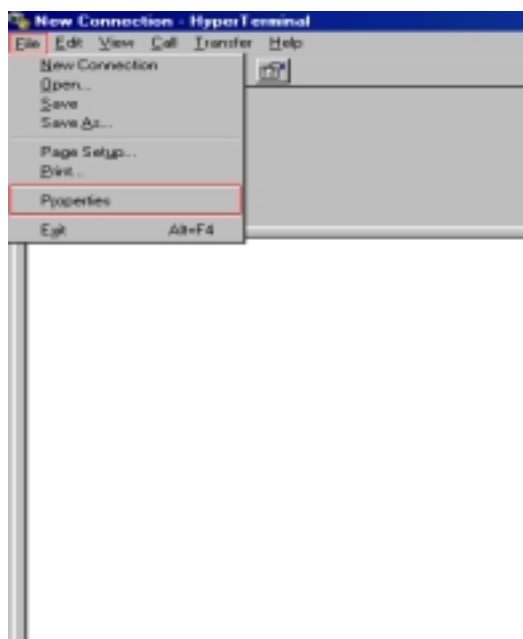


Figure 2. HyperTerminal File menu.

5. Check that Card Phone 2.0 is selected in the Connect Using field (Figure 3).



Figure 3. HyperTerminal Properties.

6. Select OK.

7. Now you can enter AT commands in the terminal window. You can test the connection to the Card Phone 2.0 by typing "AT" and pressing enter. You should get an "OK" response (Figure 4.).

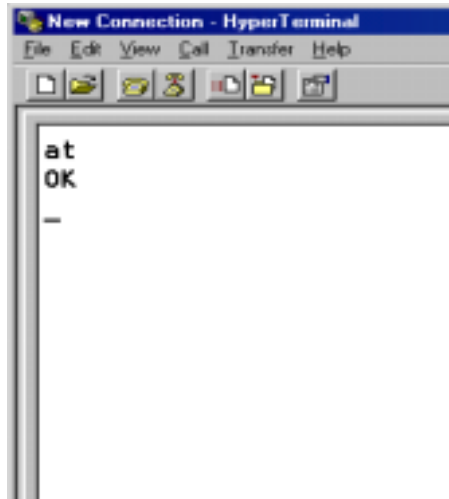
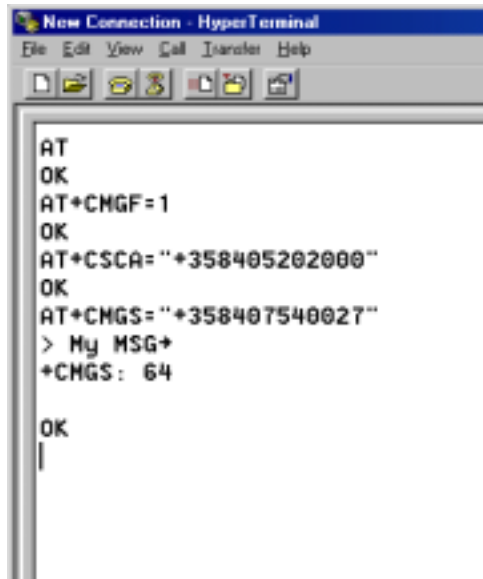


Figure 4. Testing the connection to Card Phone 2.0.

2. SMS

2.1 Sending an SMS

1. Define the message format by typing AT+CMGF=1 (Text mode).
2. Set the Message centre number by typing AT+CSCA="XXX".
XXX is your network provider's message centre number (See Figure 5).
3. Enter the recipient's phone number using the AT+CMGS="YYY" command (See Figure 5).
4. Write the message and press Ctrl-Z.



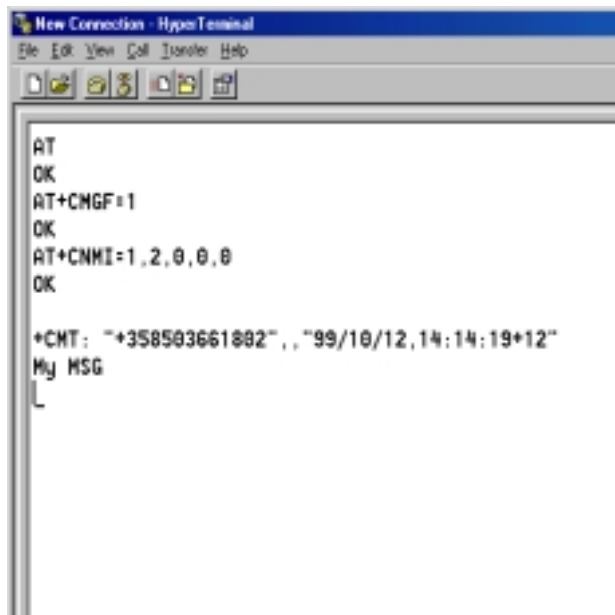
```
AT
OK
AT+CMGF=1
OK
AT+CSCA="+358405202000"
OK
AT+CHGS="+358407540027"
> My MSG+
+CHGS: 64

OK
|
```

Figure 5. Sending an SMS.

2.2 RECEIVING AN SMS

1. Define the message format by typing AT+CMGF=1 (See Figure 5).
2. Type AT+CNMI=1,2,0,0,0 in order to see all the received messages (See Figure 6).



```
AT
OK
AT+CMGF=1
OK
AT+CNMI=1,2,0,0,0
OK

+CMT: "+358503661882",,"99/10/12,14:14:19+12"
My MSG
|
```

Figure 6. Receiving an SMS.

3. ESTABLISHING A VOICE CALL

1. Type ATDZZZ; (ZZZ is the phone number) Note the semi-colon after the number (See Figure 7).



Figure 7. Voice call.

4. ESTABLISHING A DATA CALL

4.1 1Rx + 1Tx slots (9600)

1. Use ATDXXX to establish a data call (XXX is the number to call) (See Figure 8).

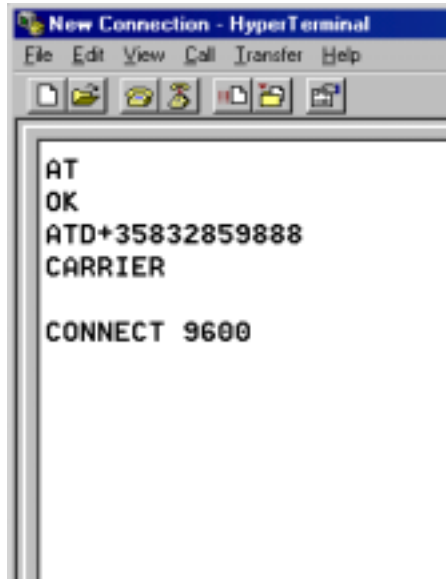
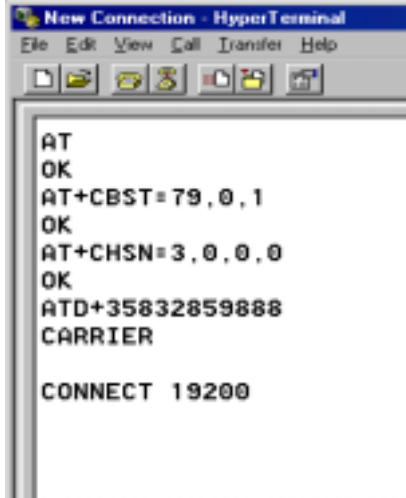


Figure 8. HSCSD V.110 data call.

NOTE! When using ISDN V.110 or V.120, please check that both your network provider and your ISP support these standards.

4.2 2Rx + 2Tx slots (V.110)

1. Set the bearer service using the AT+CBST command. Additional information can be found from "AT Command Help" (See Figure 8).
2. Set the HSCSD call parameters using the AT+CHSN command. Additional information can be found from "AT Command Help" (See Figure 9).
3. Use ATDXXX to establish a data call (XXX is the number to call) (See Figure 9).



```
AT
OK
AT+CBST=79,0,1
OK
AT+CHSN=3,0,0,0
OK
ATD+35832859888
CARRIER

CONNECT 19200
```

Figure 9. HSCSD V.110 data call.

4.3 Autobauding 2Rx + 2Tx slots

1. Set the bearer service using the AT+CBST command. Additional information can be found from "AT Command Help" (See Figure 10).
2. Set the HSCSD call parameters using the AT+CHSN command. Additional information can be found from "AT Command Help" (See Figure 10).
3. Use ATDXXX to establish a data call (XXX is the number to call) (See Figure 10).



```
AT
OK
AT+CBST=0,0,1
OK
AT+CHSN=4,0,0,8
OK
ATD+35832859666
CARRIER

CONNECT 28800
```

Figure 10. HSCSD autobauding.

LEGAL NOTICE

Copyright © Nokia Mobile Phones 2000. All rights reserved.

Reproduction, transfer, distribution or storage of part or all of the contents of this document in any form without the prior written permission of Nokia is prohibited.

Nokia and Nokia Connecting People are registered trademarks of the Nokia Corporation. Other product and company names mentioned herein may be trademarks or tradenames of their respective owners.

Nokia operates a policy of continuous development. Therefore, we reserve the right to make changes and improvements to any of the products described in this document without prior notice.

Under no circumstances shall Nokia be responsible for any loss of data or income or any special, incidental, consequential or indirect damage howsoever caused.

The contents of this document are provided "as is". Except as required by the applicable law, no warranties of any kind, either express or implied, including, but not limited to, the implied warranties of merchantability and fitness for a particular purpose, are made in relation to the accuracy, reliability or contents of this document. Nokia reserves the right to revise this document or to withdraw it at any time without prior notice.