

RF550VPN Application Examples

The examples on the following pages illustrate:

1. A LAN-to-LAN VPN setup between Site A and Site B.
Both sites have public static IP addresses.
2. A LAN-to-LAN VPN setup between Site A and Site B.
Site A has a public static IP address.
Site B has a dynamic address.
3. A Client-to-LAN VPN setup between Site A and SSH IPsec Client.
The SSH IPsec client has a public static IP address.
4. A Client-to-LAN VPN setup between Site A and SSH IPsec Client.
The SSH IPsec client has a dynamic IP address.

Note: To set up an SSH IPsec Client, see the Appendix A in the complete User Guide.

RF550VPN Screens Used to Set Up These Examples

To access the VPN input screens, use a Web Browser:

1. When the Web Browser displays the RF550VPN main menu, click the **Setup Wizard** button at the top of the screen. The Setup Wizard opens on the Time Settings screen.
2. Click the **VPN Settings** button on the left of the Time Settings screen. The VPN Settings screen for entering your Connection Name displays.

RouteFinder SOHO VPN Router

SOHO VPN Gateway

DEVICE INFORMATION DEVICE STATUS SETUP WIZARD ADVANCED SETTINGS SYSTEM TOOLS HELP

Main menu

TIME SETTINGS

DEVICE IP SETTINGS

CABLE/xDSL ISP SETTINGS

ISP ADDITIONAL SETTINGS

MODEM SETTINGS

VPN SETTINGS

SAVE & RESTART

VPN SETTINGS

Connection Name ADD

Enable	Connection Name	Local IPSEC ID	Remote IPSEC ID	Command
--------	-----------------	----------------	-----------------	---------

< BACK NEXT >

Copyright © 2000

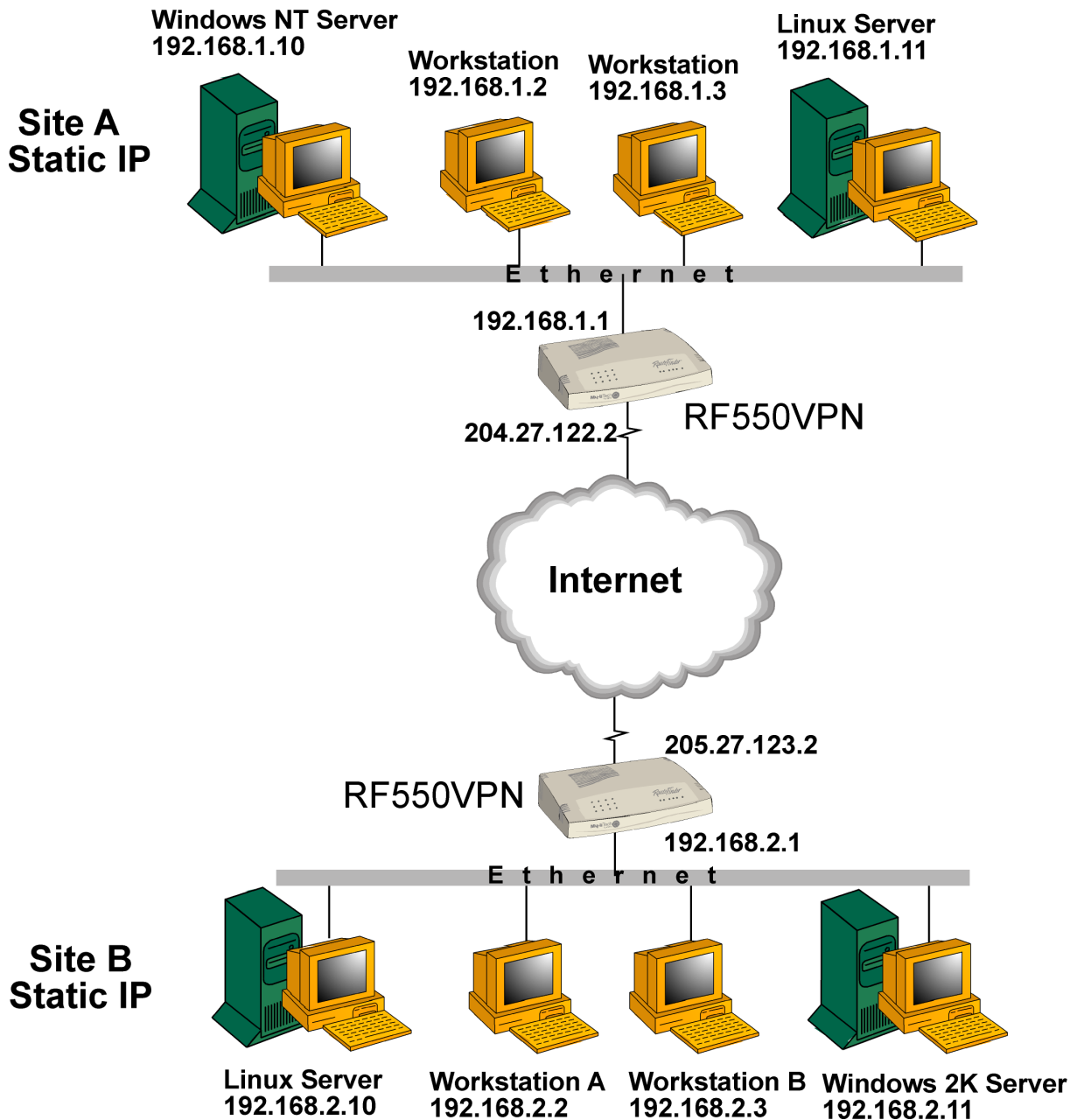
3. Type the Connection Name (i.e., Site B) onto this screen. Click the **Add** button.
4. The VPN Settings input screen (shown after each example) displays.

Example 1

LAN-to-LAN VPN Setup Between Site A and Site B.

Site A has a public static IP address.

Site B has a public static IP address.



Input for Example 1 – Site A

The screen below shows the VPN settings for Site A in the example of a LAN-to-LAN VPN setup between Site A and Site B with both sites having public static IP addresses.

Site A is connected to Site B with the **Connection Name** of Site B. The addresses correspond with the addresses shown in Example 1 on the previous page.

The screenshot shows the 'RouteFinder' web interface for a 'SOHO VPN Router'. The top navigation bar includes 'SOHO VPN Gateway', 'DEVICE INFORMATION', 'DEVICE STATUS', 'SETUP WIZARD', 'ADVANCED SETTINGS', 'SYSTEM TOOLS', and 'HELP'. The left sidebar contains a 'Main menu' with buttons for 'TIME SETTINGS', 'DEVICE IP SETTINGS', 'CABLE/xDSL ISP SETTINGS', 'ISP ADDITIONAL SETTINGS', 'MODEM SETTINGS', 'VPN SETTINGS' (highlighted in red), and 'SAVE & RESTART'. The main content area is titled 'VPN SETTINGS' and contains the following fields:

- Connection Name: Site B
- Local IPSEC Identifier: Local
- Remote IPSEC Identifier: Remote
- Remote IP Network: 192.168.2.0
- Remote IP Netmask: 255.255.255.0
- Remote Gateway IP: 205.27.123.2
- Network Interface: WAN ETHERNET (dropdown menu)
- Secure Association: IKE Manual
- Perfect Forward Secure: Enabled Disabled
- PreShared Key: 1234567890
- Key Life: 1000 Seconds
- IKE Life Time: 1000 Seconds

A yellow 'SAVE' button is located at the bottom right of the settings area. Below the settings is a table with the following columns: Enable, Connection Name, Local IPSEC ID, Remote IPSEC ID, and Command.

Enable	Connection Name	Local IPSEC ID	Remote IPSEC ID	Command
--------	-----------------	----------------	-----------------	---------

Input for Example 1 – Site B

The screen below shows the VPN settings for Site B in the example of a LAN-to-LAN VPN setup between Site A and Site B with both sites having public static IP addresses.

Site B is connected to Site A with the **Connection Name** of Site A. The addresses correspond with the addresses shown in Example 1.

RouteFinder

SOHO VPN Router

SOHO VPN Gateway

DEVICE INFORMATION

DEVICE STATUS

SETUP WIZARD

ADVANCED SETTINGS

SYSTEM TOOLS

HELP

Main menu

TIME SETTINGS

DEVICE IP SETTINGS

CABLE/xDSL ISP SETTINGS

ISP ADDITIONAL SETTINGS

MODEM SETTINGS

VPN SETTINGS

SAVE & RESTART

VPN SETTINGS

Connection Name

Local IPSEC Identifier

Remote IPSEC Identifier

Remote IP Network

Remote IP Netmask

Remote Gateway IP

Network Interface

Secure Association IKE Manual

Perfect Forward Secure Enabled Disabled

PreShared Key

Key Life Seconds

IKE Life Time Seconds

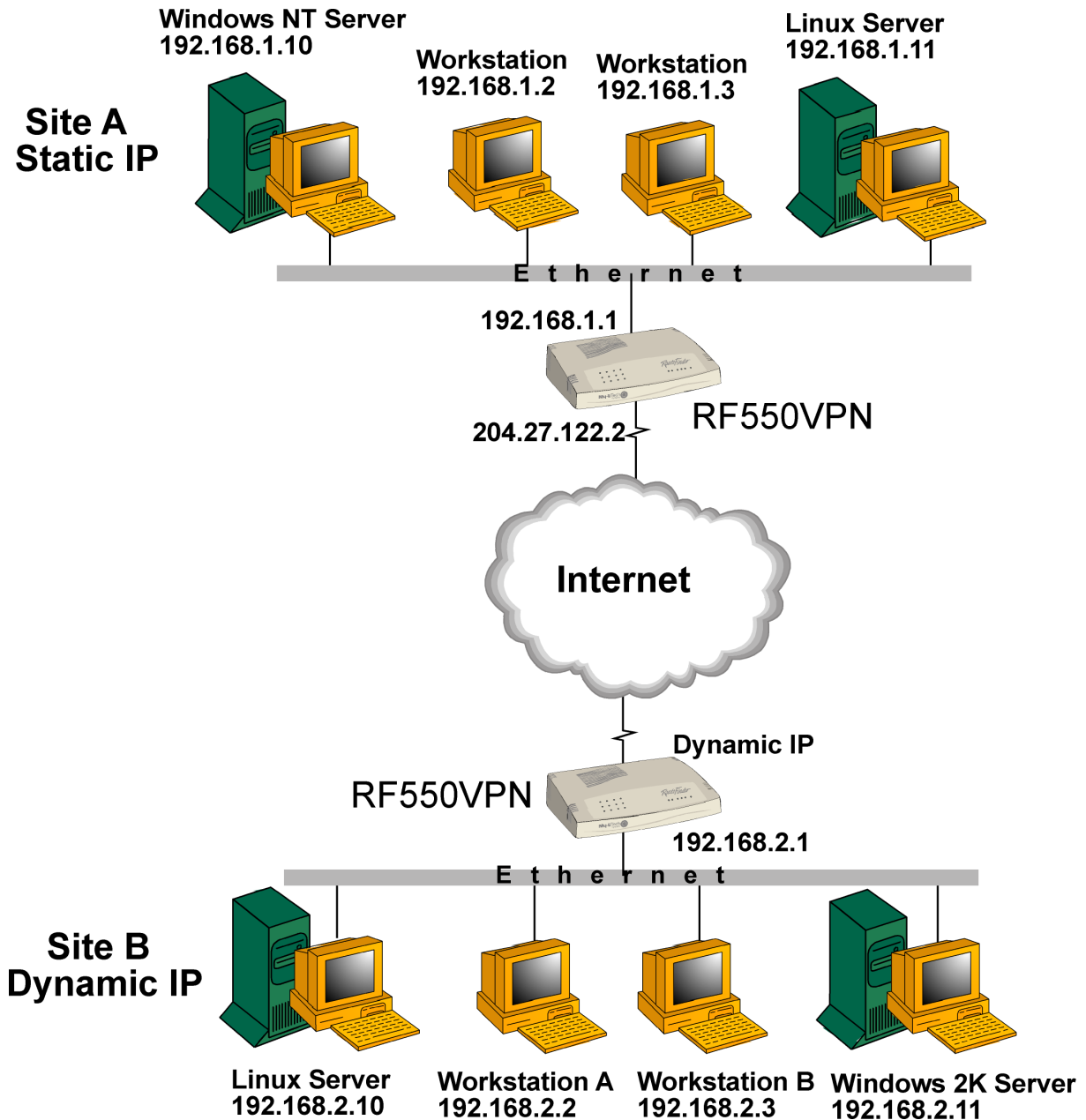
SAVE

Enable	Connection Name	Local IPSEC ID	Remote IPSEC ID	Command

Example 2

LAN-to-LAN VPN Setup Between Site A and Site B

Site A has a public static IP address
Site B has a dynamic IP address



Input for Example 2 – Site A

The screen below shows the VPN settings for Site A in the example of a LAN-to-LAN VPN setup between Site A and Site B. Site A has a public static IP address, and Site B has a dynamic IP address.

Site A is connected to Site B with the **Connection Name** of Site B. The addresses correspond with the addresses shown in Example 2 on the previous page.

RouteFinder

SOHO VPN Router

SOHO VPN Gateway

DEVICE INFORMATION

DEVICE STATUS

SETUP WIZARD

ADVANCED SETTINGS

SYSTEM TOOLS

HELP

Main menu

TIME SETTINGS

DEVICE IP SETTINGS

CABLE/xDSL ISP SETTINGS

ISP ADDITIONAL SETTINGS

MODEM SETTINGS

VPN SETTINGS

SAVE & RESTART

VPN SETTINGS

Connection Name	Site B				
Local IPSEC Identifier	Local				
Remote IPSEC Identifier	Remote				
Remote IP Network	<table style="width: 100%; border-collapse: collapse;"> <tr> <td style="border: 1px solid #ccc; width: 25px; text-align: center;">0</td> <td style="border: 1px solid #ccc; width: 25px; text-align: center;">0</td> <td style="border: 1px solid #ccc; width: 25px; text-align: center;">.8</td> <td style="border: 1px solid #ccc; width: 25px; text-align: center;">0</td> </tr> </table> 192.168.2.0	0	0	.8	0
0	0	.8	0		
Remote IP Netmask	<table style="width: 100%; border-collapse: collapse;"> <tr> <td style="border: 1px solid #ccc; width: 25px; text-align: center;">0</td> <td style="border: 1px solid #ccc; width: 25px; text-align: center;">0</td> <td style="border: 1px solid #ccc; width: 25px; text-align: center;">.8</td> <td style="border: 1px solid #ccc; width: 25px; text-align: center;">0</td> </tr> </table> 255.255.255.0	0	0	.8	0
0	0	.8	0		
Remote Gateway IP	<table style="width: 100%; border-collapse: collapse;"> <tr> <td style="border: 1px solid #ccc; width: 25px; text-align: center;">0</td> <td style="border: 1px solid #ccc; width: 25px; text-align: center;">0</td> <td style="border: 1px solid #ccc; width: 25px; text-align: center;">0</td> <td style="border: 1px solid #ccc; width: 25px; text-align: center;">0</td> </tr> </table>	0	0	0	0
0	0	0	0		
Network Interface	WAN ETHERNET ▼				
Secure Association	<input checked="" type="radio"/> IKE <input type="radio"/> Manual				
Perfect Forward Secure	<input checked="" type="radio"/> Enabled <input type="radio"/> Disabled				
PreShared Key	1234567890				
Key Life	1000 Seconds				
IKE Life Time	1000 Seconds				

SAVE

Enable
Connection Name
Local IPSEC ID
Remote IPSEC ID
Command

Input for Example 2 – Site B

The screen below shows the VPN settings for Site B in the example of a LAN-to-LAN VPN setup between Site A and Site B. Site A has a public static IP address, and Site B has a dynamic IP address.

Site B is connected to Site A with the **Connection Name** of Site A. The addresses correspond with the addresses shown in Example 2.

RouteFinder SOHO VPN Router

SOHO VPN Gateway

DEVICE INFORMATION | DEVICE STATUS | SETUP WIZARD | ADVANCED SETTINGS | SYSTEM TOOLS | HELP

Main menu

TIME SETTINGS

DEVICE IP SETTINGS

CABLE/xDSL ISP SETTINGS

ISP ADDITIONAL SETTINGS

MODEM SETTINGS

VPN SETTINGS

SAVE & RESTART

VPN SETTINGS

Connection Name: Site A

Local IPSEC Identifier: Local

Remote IPSEC Identifier: Remote

Remote IP Network: 192 . 168 . 1 . 0

Remote IP Netmask: 255 . 255 . 255 . 0

Remote Gateway IP: 204 . 27 . 122 . 2

Network Interface: WAN ETHERNET

Secure Association: IKE Manual

Perfect Forward Secure: Enabled Disabled

PreShared Key: 1234567890

Key Life: 1000 Seconds

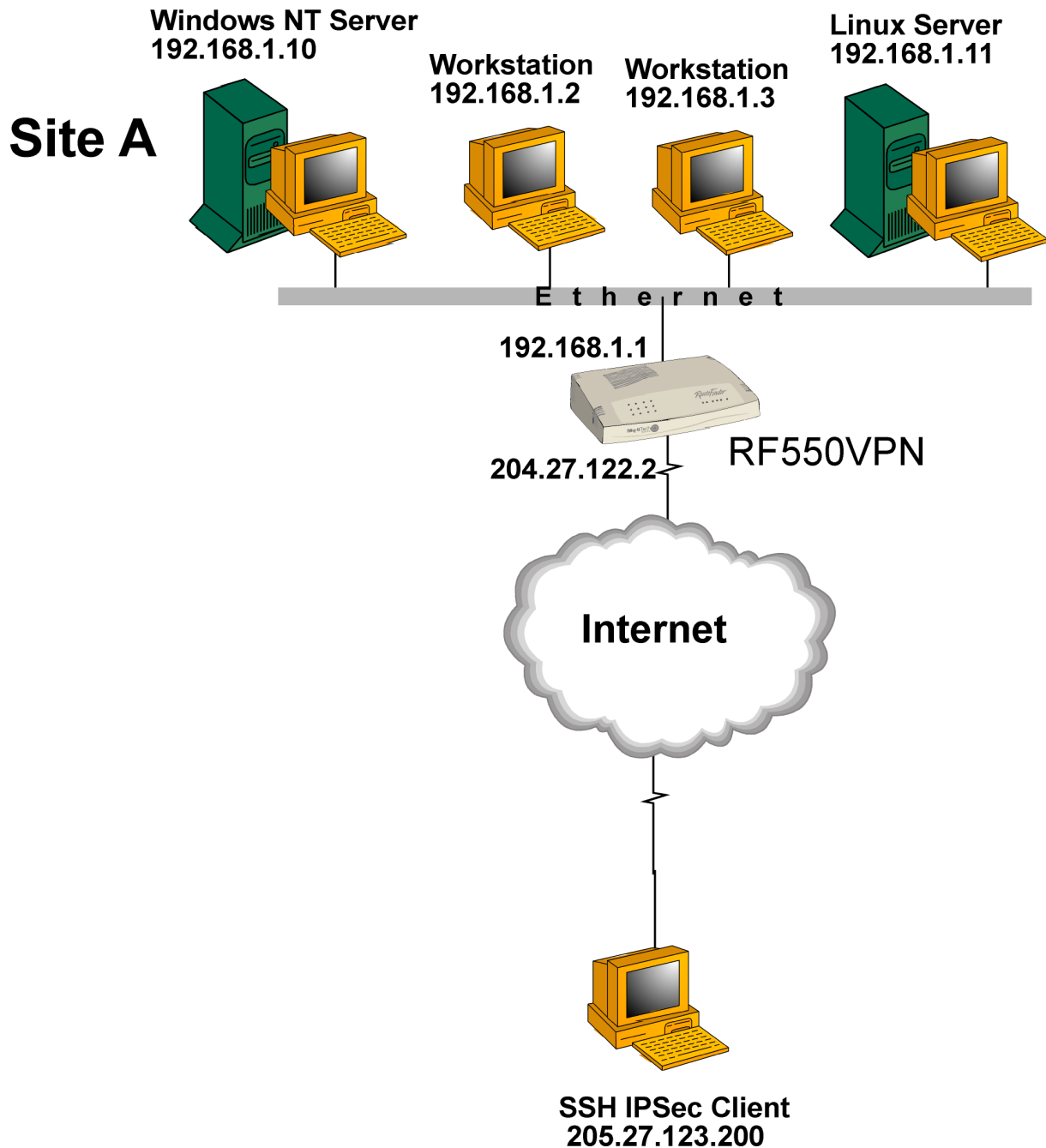
IKE Life Time: 1000 Seconds

SAVE

Enable | Connection Name | Local IPSEC ID | Remote IPSEC ID | Command

Example 3**Client-to-LAN VPN Setup Between Site A and an SSH IPsec Client**

SSH IPsec client has public static IP address.



Input for Example 3 – Site A

The screen below shows the VPN settings for Site A in the example of a Client-to-LAN VPN Setup Between Site A and an SSH IPsec Client with the SSH IPsec client having a public static IP address.

Site A is connected to an SSH IPsec Client with the **Connection Name** of StaticIPClient. The addresses correspond with the addresses shown in Example 3 on the previous page.

Note: Refer to the complete User Guide for how to set up an SSH IPsec Client.

RouteFinder SOHO VPN Router

SOHO VPN Gateway | **DEVICE INFORMATION** | **DEVICE STATUS** | **SETUP WIZARD** | **ADVANCED SETTINGS** | **SYSTEM TOOLS** | **HELP**

Main menu

- TIME SETTINGS
- DEVICE IP SETTINGS
- CABLE/xDSL ISP SETTINGS
- ISP ADDITIONAL SETTINGS
- MODEM SETTINGS
- VPN SETTINGS**
- SAVE & RESTART

VPN SETTINGS

Connection Name: StaticIPClient

Local IPSEC Identifier: Local

Remote IPSEC Identifier: Remote

Remote IP Network: 0.0.0.0

Remote IP Netmask: 0.0.0.0

Remote Gateway IP: 205.27.123.200

Network Interface: WAN ETHERNET

Secure Association: IKE Manual

Perfect Forward Secure: Enabled Disabled

PreShared Key: 1234567890

Key Life: 1000 Seconds

IKE Life Time: 1000 Seconds

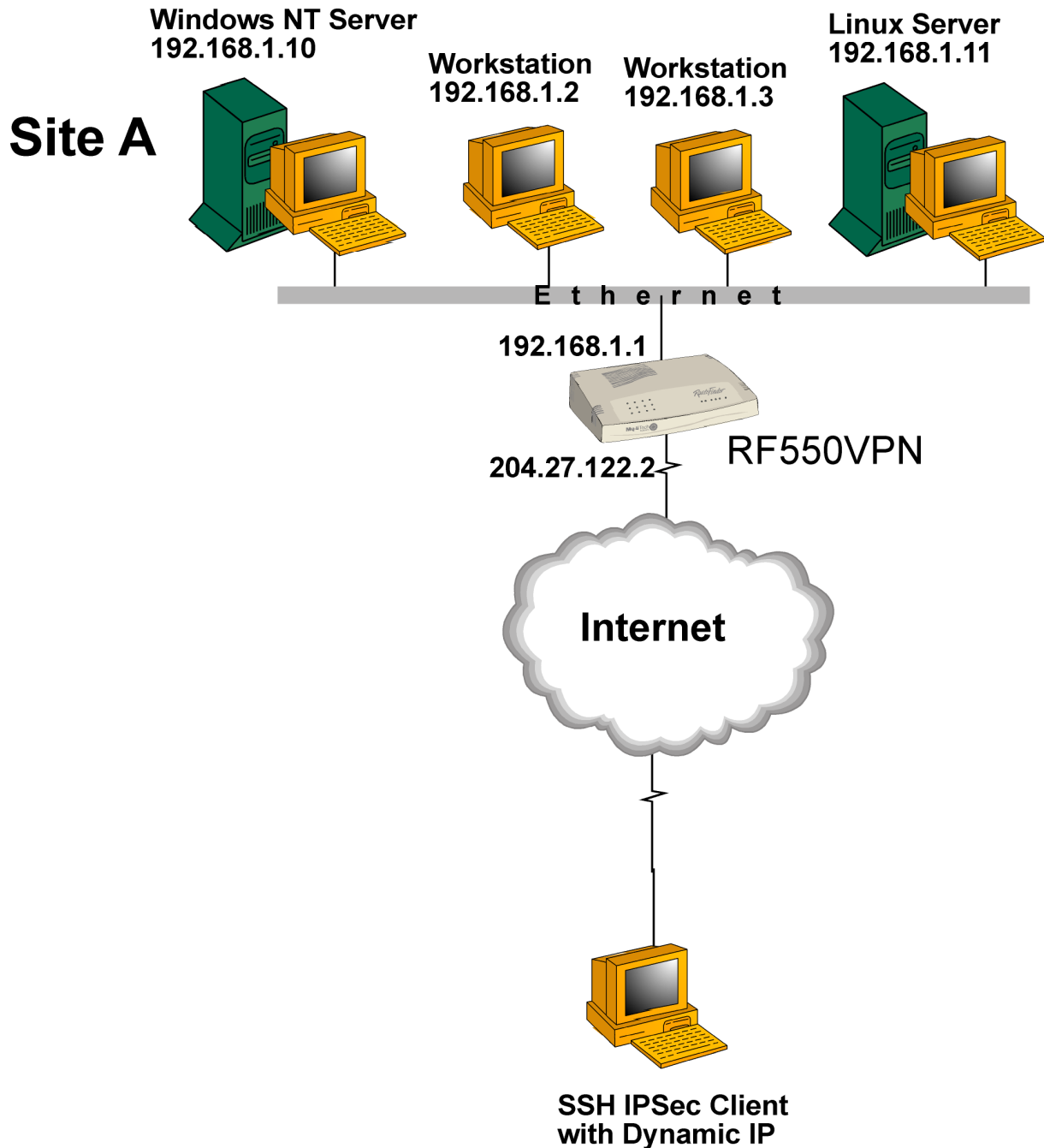
SAVE

Enable	Connection Name	Local IPSEC ID	Remote IPSEC ID	Command
--------	-----------------	----------------	-----------------	---------

Example 4

Client-to-LAN VPN Setup Between Site A and an SSH IPsec Client

SSH IPsec client has dynamic IP address:



Input for Example 4 – Site A

The screen below shows the settings for Site A in the example of a Client-to-LAN VPN Setup Between Site A and an SSH IPsec Client with the SSH IPsec client having a dynamic IP address.

Site A is connected to an SSH IPsec Client with the **Connection Name** of DynamicIPClient. The addresses correspond with the addresses shown in Example 4 on the previous page.

RouteFinder SOHO VPN Router

SOHO VPN Gateway | **DEVICE INFORMATION** | **DEVICE STATUS** | **SETUP WIZARD** | **ADVANCED SETTINGS** | **SYSTEM TOOLS** | **HELP**

Main menu

- TIME SETTINGS
- DEVICE IP SETTINGS
- CABLE/xDSL ISP SETTINGS
- ISP ADDITIONAL SETTINGS
- MODEM SETTINGS
- VPN SETTINGS**
- SAVE & RESTART

VPN SETTINGS

Connection Name: DynamicIPClient

Local IPSEC Identifier: Local

Remote IPSEC Identifier: Remote

Remote IP Network: 0.0.0.0

Remote IP Netmask: 0.0.0.0

Remote Gateway IP: 0.0.0.0

Network Interface: WAN ETHERNET

Secure Association: IKE Manual

Perfect Forward Secure: Enabled Disabled

PreShared Key: 1234567890

Key Life: 1000 Seconds

IKE Life Time: 1000 Seconds

SAVE

Enable	Connection Name	Local IPSEC ID	Remote IPSEC ID	Command
<input type="checkbox"/>	DynamicIPClient	Local	Remote	