

# RouteFinder™

## All-in-one Security Appliance



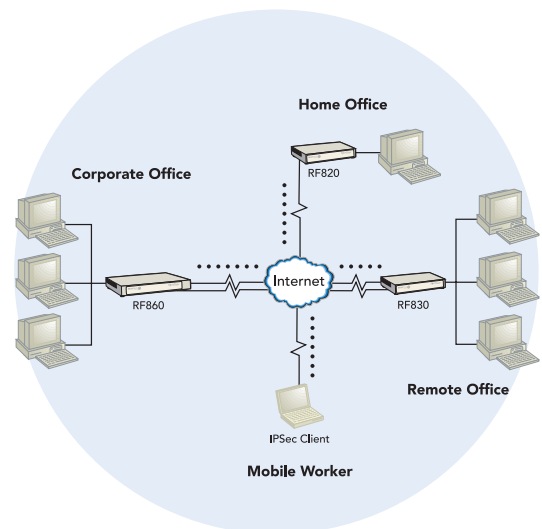
Multi-Tech's next generation RouteFinder™ all-in-one security appliance is designed to maximize network security without compromising network performance. It offers an ICSA-certified Stateful Packet Inspection firewall for the ultimate in firewall security. In addition, it provides optional e-mail anti-virus protection, content filtering, as well as free spam filtering. The RouteFinder security appliance uses data encryption, user authentication, and the Internet to securely connect telecommuters, remote offices, customers or suppliers to the corporate office while avoiding the cost of private leased lines or dial-up charges.

### Features

- Supports IPSec and PPTP VPN tunneling
- Utilizes Triple Data Encryption standard (3DES) and AES encryption
- ICSA-certified Stateful Packet Inspection firewall with packet filter rules, DNAT, SNAT and IP MASQUERADE
- Optional e-mail anti-virus subscription
- Optional content filtering subscription
- Includes free spam filtering for unsolicited bulk e-mails
- Dual WAN load balancing
- Internet and VPN failover
- High availability
- Automatic dial-backup with built-in modem (RF860) or via an external dial-up modem or ISDN terminal adapter (RF850)
- Automatic system updates to protect your network against the latest threats and DoS attacks
- Application layer security using SMTP, HTTP, DNS and SOCKS proxies
- Secure local or remote management using HTTP, HTTPS or SSH
- QoS/Bandwidth allocation
- Reporting function provides valuable troubleshooting information
- Three built-in Ethernet ports (LAN, WAN1, WAN2/DMZ)
- Shared Internet access via PPPoE, DHCP or static IP
- Internet access control tools provide client and site filtering
- Traffic monitoring and reporting
- IP address mapping/port forwarding and DMZ port
- Two-year warranty

### Benefits

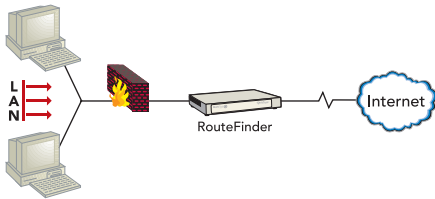
- Stateful Packet Inspection firewall
- E-mail anti-virus, content and spam filtering
- Dual WAN load balancing
- Secure IPSec and PPTP VPN



## Highlights

**RouteFinder Applications.** The RouteFinder security appliance combines firewall, e-mail anti-virus protection\*, content filtering\*, spam filtering and Virtual Private Networking (VPN) in one box. It is a cost-effective, easy to manage solution that is ideal for small to medium-sized businesses looking to add one or all of the following applications to their network:

**Firewall Security.** As businesses move toward always-on broadband Internet connections, the corporate network becomes more vulnerable to Internet hackers. The RouteFinder security appliance provides a full-featured, ICSA-certified Stateful Packet Inspection firewall to provide security from intruders attempting to access the office LAN.

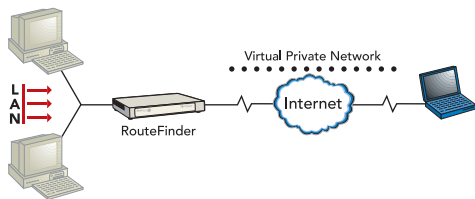


**E-mail Anti-Virus Protection.** An optional e-mail virus protection subscription ensures the network is protected against the latest virus outbreaks.

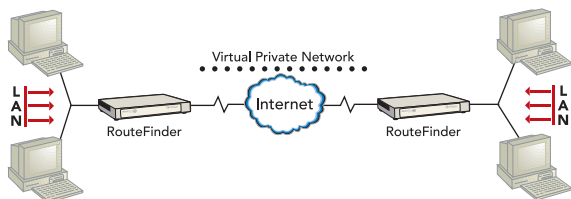
**Content Filtering.** A URL content filtering subscription allows you to automatically manage what Web content is available to your users.

**Spam Filtering.** A free spam filtering feature protects your network from unsolicited bulk e-mail utilizing real-time as well as user-definable white and black lists.

**Remote User VPN.** The RouteFinder security appliance replaces traditional dial-in remote access by allowing a remote user to connect to the corporate LAN through a secure tunnel over the Internet. The advantage is that a remote user can make a local call to an Internet Service Provider, without sacrificing the company's security, as opposed to a long distance call to the corporate remote access server.



**Branch Office VPN.** The RouteFinder security appliance sends network traffic over the branch office Internet connection instead of relying on dedicated leased line connections. This can save thousands of dollars in line costs and reduce overall hardware and management expenses.



**Plug-and-Play Security Appliance.** The RouteFinder security appliance plugs in at the Internet connection of each office. It provides three independent network interfaces (LAN, WAN and DMZ) that separate the protected office network from the Internet while offering an optional public network for hosting Web, e-mail or ftp servers. Each network interface is independently monitored and visually displayed on the front of the appliance.

**State-of-the-Art Firewall Security.** The RouteFinder security appliance is ICSA-certified to provide network layer security utilizing Stateful Packet Inspection, the sophisticated firewall technology found in large enterprise firewalls, to protect the network against intruders and Denial of Service (DoS) attacks. It also uses Network Address Translation (NAT) to hide internal, non-routable IP addresses and allows internal hosts with unregistered IP addresses to function as Internet-reachable servers.



In addition to network layer security, the RouteFinder security appliance provides application level security using SMTP, HTTP, DNS and SOCKS proxies. It also utilizes filters to block specific Internet content to protect against viruses, dangerous ActiveX controls, Java, Javascript and Cookies. An automatic update feature provides the highest level of security by automatically downloading and installing the latest system software and security patches protecting against any newly discovered hacker attacks with a single click.

**E-mail Anti-Virus Protection.** Computer viruses are one of the leading security threats to Internet-connected networks. Users can unknowingly download and launch dangerous viruses that can damage data or cause computer crashes.



An optional e-mail virus protection subscription utilizes Kaspersky's high-performance, ICSA-tested, anti-virus engine which checks both incoming and outgoing e-mail for viruses in real-time. Automatic anti-virus updates are downloaded at user-defined intervals to ensure protection is current. The e-mail anti-virus protection can be easily renewed on an annual basis. Ask about our free 30-day evaluation.

**Content Filtering.** The RouteFinder security appliance supports an optional URL content filtering subscription. It utilizes SurfControl's content categorization list, the world's largest database of Internet content, which includes 5 million Web sites covering over 900 million Web pages. Daily updates of categorized sites are available for download. In addition, it includes URL access and deny reporting. The subscription can easily be renewed on an annual basis. Ask about our free 30-day evaluation.



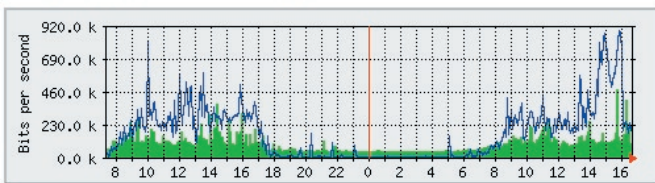
**Spam Filtering.** A free spam filtering feature protects your network from unsolicited bulk e-mail utilizing real-time as well as user-definable white and black lists. In addition, the spam filter checks for null sender and bad address patterns in e-mail addresses. It also utilizes the reverse DNS test as well as attachment and expression filters.

\* Optional yearly subscription.

**Secure VPN Connections.** The RouteFinder security appliance uses IPSec and PPTP industry standard protocols, data encryption, user authentication, and the Internet to provide high-performance, secure VPN connections. For LAN-to-LAN connectivity, the RouteFinder security appliance utilizes the IPSec protocol with strong 3DES and AES encryption using IKE and PSK key management. For client-to-LAN connectivity, Multi-Tech offers optional IPSec client software. It also supports remote users that want to use the PPTP VPN client built into the Windows operating system.

**Reporting.** The RouteFinder security appliance includes a suite of integrated monitoring and reporting tools that help administrators troubleshoot the Internet security system and report to management the usage of the Internet. This includes reporting on system uptime, hardware and network utilization. HTTP and SMTP proxy reports provide information about any actions needed to handle virus-infected e-mails. The RouteFinder security appliance also disables and logs attempted port scans. In addition, it provides accounting reports and a self-monitor that sends an e-mail notification of system-level issues.

'Daily' Graph (5 Minute Average)



Max In: 479.1 kb/s Average In: 100.2 kb/s Current In: 106.4 kb/s  
Max Out: 886.3 kb/s Average Out: 173.6 kb/s Current Out: 226.7 kb/s

**Robust, Easy-to-Use Management.** The RouteFinder security appliance allows a network administrator to securely manage the devices either through a web browser or at the command line. The browser-based option uses the HTTP or HTTPS protocol, also known as SSL (Secure Sockets Layer) to provide 128-bit encryption to secure the management session. The command line interface is accessible via SSH (Secure Shell) and supports SCP (Secure Copy).

**User Authentication.** To increase the level of security, user identity can be verified before access to Internet services is permitted. The RouteFinder security appliance supports authentication at a local user database as well as at external user databases, like Windows 2000 or RADIUS server.

**Automatic Dial Backup.** The RouteFinder RF850 security appliance provides a serial port that, when connected to a dial-up modem or ISDN terminal adaptor, can serve as a backup resource for Internet access and VPN tunneling if your cable or DSL service goes down. The RouteFinder RF860 model includes a built-in modem.

**QoS/Bandwidth Allocation.** Enabling QoS on the RouteFinder security appliances allows administrators to customize upstream and downstream bandwidth allocation. Custom priority rules allow administrators to assign a percentage of available bandwidth based on the packet's protocol. These packet filter rules help mold traffic and set preferential treatment for certain services or host IPs.

**Dual WAN Load Balancing, Internet and VPN Failover.** The DMZ port, on the RouteFinder security appliance, can also function as a second WAN port for Internet access. This allows for two separate ISP connections giving administrators the ability to balance traffic by distributing it over the two links. In addition, if one port were to go down, the RouteFinder appliance would automatically re-route all Internet and VPN traffic to the other connection. The second WAN port greatly enhances performance and system uptime.

**High Availability.** Redundancy is the primary method of increasing any systems' availability. To achieve high availability, the RouteFinder security appliance utilizes a clustering solution, where two RouteFinder appliances act in conjunction with each other with one appliance acting as the main system providing the services and the other acting as a standby system. If the main system were to go down, it would automatically fail-over to the standby system to provide continuous availability without an interruption of service.

**Fully Qualified Domain Name (FQDN) Feature.** The FQDN featured on the RouteFinder security appliance allows you to utilize a static name in the IPSec VPN setup, like "branchoffice.dyndns.org", instead of a dynamic IP address, to create static-to-dynamic or dynamic-to-dynamic VPN IPSec tunnels. This allows all of the IPSec VPN connections to act like static-to-static connections. The RouteFinder security appliance checks the FQDN IPSec configuration every two minutes for IP address changes. If the IP address is different than the last time it checked, it drops the current tunnel and creates a new one. This helps to keep IPSec VPN tunnels readily available with minimal interruptions in data communication.

**Optional VPN Client Software.** Multi-Tech provides easy-to-use IPSec VPN client software that transparently secures Internet communications anytime, anywhere. VPN client software is ideal for business users who travel frequently or work from home providing secure remote access through the RouteFinder security appliance for applications such as remote access, file transfer, e-mail, Web browsing, messaging or IP telephony. Encryption and authentication operations are completely transparent to the end user. A 30-day free trial CD is included with the RouteFinder security appliance.

**RouteFinder SOHO.** The RouteFinder SOHO security appliance is ideal for the small branch office or telecommuter who needs secure access to the corporate LAN. In addition to providing one or two WAN Ethernet port(s) for DSL or cable broadband Internet access, it also offers both client-to-LAN and LAN-to-LAN VPN connectivity based on the IPSec or PPTP protocols. It supports up to 10 IPSec tunnels and provides 3DES and AES encryption to ensure that your information remains private. Go to [www.multitech.com/products](http://www.multitech.com/products) for more details.

**Comprehensive Service and Support.** Multi-Tech's two-year product warranty and service commitment includes free telephone technical support, 24-hour web site and ftp support.

Features	RF860	RF850
<b>Appliance</b>		
Ethernet Ports (LAN, WAN1, WAN2/DMZ)	10/100	10/100
Recommended Network Users	100	50
Rackmount/Standalone	Yes	Yes
<b>Firewall Features</b>		
Stateful Packet Inspection	Yes	Yes
Anti-Virus Option	Yes	Yes
Content Filtering Option	Yes	Yes
Spam Filtering	Yes	Yes
Application Proxies	Yes	Yes
Port and IP Filtering	Yes	Yes
Denial of Service Protection (DoS)	Yes	Yes
Network Address Translation (NAT)	Yes	Yes
Virtual Server	Yes	Yes
Intrusion/Port Scan Detection	Yes	Yes
H.323 Pass Through	Yes	Yes
<b>VPN Features</b>		
Remote User (Client-to-LAN)	Yes	Yes
Branch Office (LAN-to-LAN)	Yes	Yes
3DES/AES Encryption	Yes	Yes
Encryption Throughput	15M bps	5M bps
IPSec/PPTP VPN	Yes	Yes
Total Number of Tunnels*	100	50
Dynamic-to-dynamic Tunneling	Yes	Yes
VPN Using FQDN	Yes	Yes
X.509 Certificates	Yes	Yes
<b>Management Features</b>		
E-mail Alerts	Yes	Yes
Local and Remote Management	Yes	Yes
Logging	Yes	Yes
Reporting	Yes	Yes
Web Based (HTTP, HTTPS/SSL)	Yes	Yes
Secure Shell (SSH)	Yes	Yes
Syslog	Yes	Yes
<b>Other Features</b>		
Shared Internet Access	Yes	Yes
Automatic Dial-backup	Yes	Yes
Integrated Modem	Yes	No
QoS/Bandwidth Allocation	Yes	Yes
High Availability	Yes	Yes
Dual WAN Load Balancing	Yes	Yes
Internet/VPN Failover	Yes	Yes
Memory	1GB	512MB
Internal Modem	Yes	No
PPPoE	Yes	Yes
DHCP Client/Server	Yes	Yes
User Authentication (Web Access)	Yes	Yes
Live Updates	Yes	Yes
Warranty	2-years	2-years

\* Recommended combined IPSec and PPTP tunnels. Total may vary based on future usage, applications and available bandwidth.

Specifications	
Power	100-240v AC, 50/60Hz
Physical Description	12" w x 1.7" h x 8" d; 5.8 lbs. (30.4 cm x 4.4 cm x 20.3 cm; 2.6 kg.)
<b>Operating Environment</b>	
Temperature Range	+32° to +120° F (0° to 50° C)
Humidity	25-85% noncondensing
Approvals	FCC Part 15 (Class A), CE Mark, UL 60950

## Ordering Information

Product	Description	Region
RF850*	Internet Security Appliance	Global
RF860*	Internet Security Appliance	Global
RFIPSC2-1	IPSec VPN Client-1 User	Global
RFIPSC2-5	IPSec VPN Client-5 User	Global
RFIPSC2-10	IPSec VPN Client-10 User	Global
RFAVUPG-850	Anti-virus Upgrade/Renewal	Global
RFAVUPG-860	Anti-virus Upgrade/Renewal	Global
RFCFUPG-850	Content Filter Upgrade/Renewal	Global
RFCFUPG-860	Content Filter Upgrade/Renewal	Global

\* These products may have country specific versions for regions not listed. Specify country when ordering.

Made in Mounds View, MN, U.S.A.

Features and specifications are subject to change without notice.

**Trademarks / Registered Trademarks:** RouteFinder, Multi-Tech, and the Multi-Tech logo: Multi-Tech Systems, Inc. / All other products and technologies are the trademarks or registered trademarks of their respective holders.

**World Headquarters**  
Tel: (763) 785-3500  
(800) 328-9717  
[www.multitech.com](http://www.multitech.com)

**EMEA Headquarters**  
Multi-Tech Systems (EMEA)  
United Kingdom  
Tel: +(44) 118-959 7774

Multi-Tech Systems (EMEA)  
France  
Tel: +(33) 1 64 61 09 81

