

# RouteFinder™ SOHO

## SOHO Security Appliance



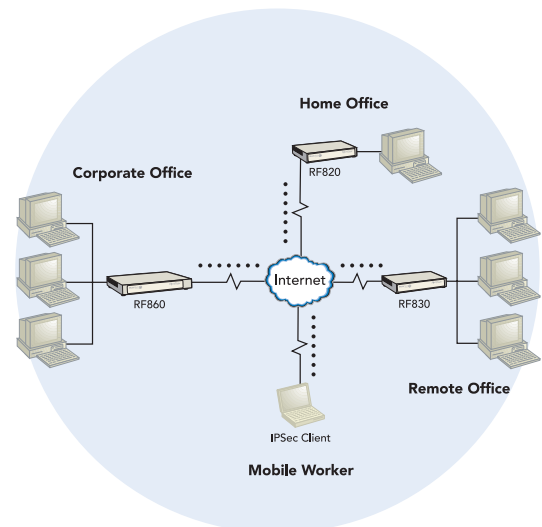
Multi-Tech's next generation RouteFinder™ SOHO security appliance is ideal for the small branch office or telecommuter who needs secure access to the corporate LAN. In addition to providing one or two WAN Ethernet port(s) for DSL or cable broadband Internet access, it also offers both client-to-LAN and LAN-to-LAN VPN connectivity based on the IPsec or PPTP protocols. The RouteFinder SOHO security appliance provides 168-bit 3DES and AES encryption to ensure that your information remains private. In addition, it offers secure Internet firewall services.

### Features

- One (RF820) or two (RF830) WAN Ethernet port(s) connect to a DSL or cable modem(s)
- Supports IPsec VPN tunnels and PPTP tunnels for secure LAN-to-LAN and client-to-LAN access over the Internet
- 3DES and AES encryption
- Dual WAN load balancing (RF830)
- Internet and VPN failover (RF830)
- Shared Internet access via PPPoE, DHCP or static IP
- Serial port for automatic dial-backup if your broadband connection goes down (RF820)
- Built-in 4-port 10/100M bps switch
- Stateful Packet Inspection firewall with packet filter rules, DNAT, SNAT and IP MASQUERADE
- Built-in dynamic DNS client
- Supports VPN tunneling using FQDN
- Protects your LAN against Denial of Service (DoS) attacks
- Network monitoring via Syslog allows network administrator to view all incoming and outgoing packets, status of connections and specific connection events
- Configuration and management using any web browser
- Internet access control tools provide client and site filtering
- Traffic monitoring and reporting
- Flash memory for easy updates
- IP address mapping/port forwarding
- Two-year warranty

### Benefits

- Stateful Packet Inspection firewall
- Up to 15 IPsec VPN tunnels
- Strong 3DES and AES encryption



## Highlights

**Secure VPN Connections.** The RouteFinder SOHO security appliance uses the IPSec or PPTP industry standard protocol, data encryption, and the Internet to provide high-performance, secure VPN connections. For LAN-to-LAN connectivity, the RouteFinder SOHO security appliance utilizes the IPSec protocol to provide up to 15 tunnels with strong 3DES or AES encryption using IKE and PSK key management. For client-to-LAN connectivity, Multi-Tech provides optional IPSec client software allowing road warriors secure access to the company's internal network.

The RouteFinder SOHO security appliance also supports remote users that want to use the PPTP VPN client built into the Windows operating system. This provides 40-bit or 128-bit encryption, user name and password authentication.

**Connect Multiple Users to the Internet with Broadband Speed.**

With the RouteFinder SOHO security appliance, multiple users can share access to the Internet with only one IP account. The WAN Ethernet port(s) support DSL or cable speeds of up to 20M bps.

**Built-in 10/100 Switch.** The integrated 4-port 10/100M bps switch eliminates the need for an additional hub or switch to connect users not on a LAN. It ensures high-speed transmission and can serve as a completely dedicated full duplex backbone.

**Network Security.** The RouteFinder SOHO appliance provides network layer security utilizing Stateful Packet Inspection, the sophisticated firewall technology found in large enterprise firewalls, to protect the network against intruders and Denial of Service (DoS) attacks. It also uses Network Address Translation (NAT) to hide internal, non-routable IP addresses and allows internal hosts with unregistered IP addresses to function as Internet-reachable servers.

**Dual WAN Load Balancing, Internet and VPN Failover.** The RouteFinder SOHO security appliance model RF830 has a second WAN port for Internet access. This allows for two separate ISP connections giving administrators the ability to balance traffic by distributing it over the two links. In addition, if one port were to go down, the RouteFinder appliance would automatically re-route all Internet and VPN traffic to the other connection. The second WAN port greatly enhances performance and system uptime.

**Automatic Dial Backup.** The RouteFinder SOHO (RF820) security appliance also provides an additional serial port that, when connected to a dial-up modem or ISDN terminal adaptor, can serve as a backup resource for Internet access if your cable or DSL service goes down. It can also serve as the primary connection if you do not have broadband connectivity yet in your area.

**Virtual Server Support.** In addition to providing shared Internet access, the RouteFinder SOHO security appliance can support a web, ftp or other Internet servers. Once configured, it only accepts unsolicited IP packets addressed to the web, ftp or other specified servers.

**Dynamic DNS Client.** The RouteFinder SOHO security appliance has a built in Dynamic DNS client that is compatible with DynDNS.org. It automatically sends an update to the DynDNS.org update server if the WAN IP address changes. A registered Dynamic DNS account allows you to host your own web site, mail server, or other services on the Internet without having to obtain a static IP address or keep track of a dynamic IP address. It also aids in creating static-to-dynamic or dynamic-to-dynamic IPSec VPN tunnels. In addition, with a Dynamic DNS account you can establish a PPTP VPN tunnel behind the RouteFinder SOHO security appliance by configuring your PPTP client to connect to yourhostname.dydns.org instead of a dynamic IP address.

**Fully Qualified Domain Name (FQDN) Feature.** The FQDN featured on the RouteFinder SOHO security appliance allows you to utilize a static name in the IPSec VPN setup, like "branchoffice.dyndns.org", instead of a dynamic IP address, to create static-to-dynamic or dynamic-to-dynamic VPN IPSec tunnels. This allows all of the IPSec VPN connections to act like static-to-static connections. The RouteFinder SOHO security appliance checks the FQDN IPSec configuration every two minutes for IP address changes. If the IP address is different than the last time it checked, it drops the current tunnel and creates a new one. This helps to keep IPSec VPN tunnels readily available with minimal interruptions in data communication.

**Optional VPN Client Software.** Multi-Tech provides easy-to-use IPSec VPN client software that transparently secures Internet communications anytime, anywhere. VPN client software is ideal for business users who travel frequently or work from home providing secure remote access through the RouteFinder security appliance for applications such as remote access, file transfer, e-mail, Web browsing, messaging or IP telephony. Encryption and authentication operations are completely transparent to the end user. In general, IPSec provides stronger encryption than PPTP resulting in better overall security. A 30-day free trial CD is included with the RouteFinder SOHO security appliance.

**RouteFinder All-in-one Security Appliance.** Multi-Tech's next generation RouteFinder all-in-one security appliance is designed to maximize network security without compromising network performance. It offers an ICSA-certified Stateful Packet Inspection firewall for the ultimate in firewall security. It also provides optional e-mail anti-virus protection and content filtering, as well as free spam filtering. In addition, it provides secure IPSec and PPTP VPN connections to securely connect telecommuters, remote offices, customers or suppliers to the corporate office. Go to [www.multitech.com/products](http://www.multitech.com/products) for more details.

**Comprehensive Service and Support.** The Multi-Tech commitment to service means we provide a two-year product warranty and service that includes free telephone technical support, 24-hour web site and ftp support.

Features	RF830	RF820
<b>Appliance</b>		
Ethernet Ports	4 x 10/100BaseT (LAN) 2 x 10/100BaseT (WAN)	4 x 10/100BaseT (LAN) 1 x 10/100BaseT (WAN)
Recommended Network Users	25	25
<b>Firewall Features</b>		
Stateful Packet Inspection	Yes	Yes
Network Address Translation (NAT)	Yes	Yes
Filtering (Port Number and IP Address)	Yes	Yes
Virtual Server	Yes	Yes
Denial of Service Protection (DoS)	Yes	Yes
Firewall Throughput	20M bps	20M bps
H.323 Pass Through	Yes	Yes
<b>VPN Features</b>		
Remote User (Client-to-LAN)	Yes - IPSec and PPTP	Yes - IPSec and PPTP
Branch Office (LAN-to-LAN)	Yes - IPSec	Yes - IPSec
3DES/AES Encryption	Yes	Yes
IPSec/PPTP VPN	Yes	Yes
Encryption Throughput	3M bps	3M bps
IKE	Yes	Yes
VPN Using FQDN	Yes	Yes
Recommended VPN Tunnels (Total)	Up to 15	Up to 15
<b>Management Features</b>		
Web Based (HTTP)	Yes	Yes
E-mail Alerts	Yes	Yes
Local and Remote Management	Yes	Yes
Syslog	Yes	Yes
Intrusion Logging	Yes	Yes
<b>Other Features</b>		
Shared Internet Access	Yes	Yes
Automatic Dial-backup (Serial Port)	No	Yes
Dual WAN Load Balancing	Yes	No
Internet/VPN Failover	Yes	No
PPPoE	Yes	Yes
DHCP Client/Server	Yes	Yes
Built-in Dynamic DNS Client	Yes	Yes
Multiple Public IP's on WAN	Yes	Yes
Warranty	2-years	2-years
<b>Specifications</b>		
Power	12 VDC, 1A	12 VDC, 1A
Physical Description	9.75" w x 1.5" h x 6.5" d; 2.4 lbs. (24.8 cm x 3.8 cm x 16.5 cm; 1.0 kg.)	9.75" w x 1.5" h x 6.5" d; 2.4 lbs. (24.8 cm x 3.8 cm x 16.5 cm; 1.0 kg.)
<b>Operating Environment</b>		
Temperature Range	+32° to +120° F (0° to 50° C)	+32° to +120° F (0° to 50° C)
Humidity	25-85% noncondensing	25-85% noncondensing
Approvals	FCC Part 15 (Class B), CE Mark, UL 60950	FCC Part 15 (Class B), CE Mark, UL 60950

## Ordering Information

Product	Description	Region
RF830*	SOHO Internet Security Appliance	Global
RF820*	SOHO Internet Security Appliance	Global

\* Specify country when ordering.

Made in Mounds View, MN, U.S.A.

Features and specifications are subject to change without notice.

VPN Client Software	Description	Region
RFIPSC2-1	IPSec VPN Client-1 User	Global
RFIPSC2-5	IPSec VPN Client-5 User	Global
RFIPSC2-10	IPSec VPN Client-10 User	Global

**Trademarks / Registered Trademarks:** RouteFinder, Multi-Tech, and the Multi-Tech logo. Multi-Tech Systems, Inc. / All other products and technologies are the trademarks or registered trademarks of their respective holders.

**World Headquarters**  
Tel: (763) 785-3500  
(800) 328-9717  
[www.multitech.com](http://www.multitech.com)

**EMEA Headquarters**  
Multi-Tech Systems (EMEA)  
United Kingdom  
Tel: +(44) 118-959 7774

Multi-Tech Systems (EMEA)  
France  
Tel: +(33) 1 64 61 09 81