

**Forget it spam,
you're not getting in!**

*Server-based, multi-layered anti-spam solution used by
thousands of customers*

The most effective way to beat spammers at their game is to use a leading anti-spam solution, GFI MailEssentials™. It features two anti-spam engines to give administrators a very high spam capture rate of over 99% out of the box with minimal configuration. It also ships at a highly competitive price.

Its SpamRazer™ anti-spam engine requires no tweaking or training for it to be fully effective to filter the latest spam attacks that appear on a regular basis. With greylisting, IP reputation filtering, a Bayesian engine and other advanced anti-spam technology modules, administrators can be assured that the spam capture rate is the highest possible. GFI MailEssentials also has an enviable low rate of false positives.

GFI MailEssentials can detect and block phishing emails, and adds email management tools to your mail server: disclaimers (now as freeware), mail monitoring, Internet mail reporting, list server, server-based auto replies and POP3 downloading.

BENEFITS

- » Support for most industry-leading messaging platforms including Microsoft Exchange 2003, 2007, 2010 and Lotus Domino
- » High spam detection rate (over 99%) through various anti-spam technologies
- » Very low rate of false positives
- » Server-based install; no client software required
- » Multi-layered anti-spam solution at an excellent price.

**Multi-layered
anti-spam filter**

Thousands of customers

**Low market price
for SMEs**

Disclaimers now
available for
FREE



GFI MailEssentials™

Anti-spam solution for Exchange/SMTP/Lotus

Over 12 spam capture techniques

- » SpamRazer (full info below)
- » Bayesian filtering (full info opposite)
- » Greylisting (full info below)
- » Anti-phishing
- » Attachment spam check filters for image, PDF spam, Excel and ZIP spam
- » Email header analysis and keyword checking
- » IP reputation filtering
- » Third party DNS blocklists (DNSBL) checking
- » Phishing URBL
- » Sender Policy Framework (SPF)
- » Directory Harvesting
- » Custom white/blocklists
- » URI DNS blocklist
- » Zombie check.

Server-based anti-spam and anti-phishing

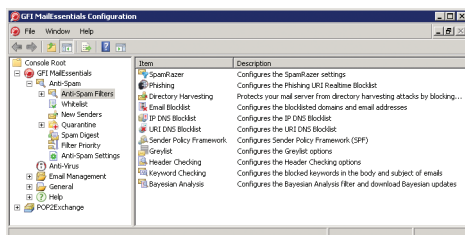
GFI MailEssentials is server-based and installs on the mail server or at the gateway, eliminating the deployment and administration hassle of desktop-based anti-spam and anti-phishing products.

SpamRazer – A powerful anti-spam engine

SpamRazer is a powerful anti-spam engine that has been designed for ease-of-use. Due to frequent updates, SpamRazer needs no tweaking to be fully effective in filtering the latest spam attacks. Not only will administrators benefit from out-of-the-box filtering but they will also gain protection from each new attack without the need to tweak GFI MailEssentials. With SpamRazer filtering, greylisting, IP reputation filtering, Bayesian filtering and other advanced anti-spam technologies, our spam capture rate is over 99%. GFI MailEssentials also has an enviable low rate of false positives ensuring the safe delivery of important emails.

Greylisting

Greylisting is an anti-spam technique used to identify and block spam emails originating from non-RFC compliant mail servers (which are often utilized by spammers). For each new SMTP transmission, GFI MailEssentials records the sender, recipient and sending mail server's IP address (known as a triplet), and also rejects emails with a temporary failure message. Compliant email servers normally try and resend the message after a few minutes – this causes their triplet to be confirmed, and connections with the same triplet are no longer rejected. Non-compliant mail servers do not try to resend the message.



GFI MailEssentials anti-spam filters

Bayesian filtering technology

GFI's Bayesian filter uses an advanced mathematical formula and a dataset which is 'custom-created' for your installation: The spam data is continuously updated by GFI and is automatically downloaded by GFI MailEssentials, whereas the ham data is automatically collected from your own outbound mail. In short, Bayesian filtering has the following advantages:

- » Looks at the whole spam message, not just keywords or known spam signatures
- » Learns from your outbound mail (ham) and reduces false positives
- » Adapts itself over time by learning about new spam and new valid mail
- » Dataset is unique to your company, making it impossible to bypass
- » Multilingual and international.

Intelligent automatic whitelist management reduces false positives

Whitelists enable you to ensure that mail from particular senders or domains are never flagged as spam, permitting more stringent anti-spam rules. GFI MailEssentials includes an automatic whitelist management tool, which automatically adds mail recipients to your whitelist. This reduces false positives without any need for additional administration.

Other features:

- » Precise real-time dashboard
- » Quarantine of spam mail
- » Spam digest – daily reports to end-users
- » Sorts spam to users' junk mail folders
- » Protects your users against the menace of phishing emails
- » Instant view of emails from new senders
- » Reports spam filtering and email usage
- » Allows users to whitelist or blacklist via public folders
- » Downloads updates to spam profile database
- » Supports virtual environments
- » Supports Unicode
- » Supports industry-leading messaging platforms such as Exchange Server, Lotus Domino and other SMTP servers
- » And much more!

Software available in the following languages



System requirements

- » Windows 2003/XP/2008/2008 R2
- » IIS5 SMTP service installed and running as an SMTP relay to your mail server
- » Microsoft Exchange server 2010, 2007, 2003, 2000, -5.5, 4.5; Lotus Domino 6 and up; or an SMTP-compliant mail server
- » For the list server feature, Microsoft Message Queueing Services is required
- » Microsoft .NET Framework 2.0.

Download your free trial from <http://www.gfi.com/mes>

Microsoft
GOLD CERTIFIED
Partner

In association with:

GFI MailEssentials
Anti-spam solution for Exchange/SMTP/Lotus